

Sample Test Questions

The sample test questions are also available on the CHSPE Web site at <http://chspe.net>. On the Web site, the multiple-choice questions are formatted the same way they are in the actual test booklet.

English-Language Arts Section

Writing Task

The English-language Arts section of the CHSPE includes one writing task. For the writing task you will be asked to write an essay in which you state and support your *opinion* about a topic. You might be presented with a statement and asked whether or not you agree with the statement. If so, you would be asked to describe why you agree or disagree with the statement, and to *explain your reasons*. Alternatively, you might be presented with a question. In this case, you would be asked to state your opinion and explain your reasons for holding that opinion.

Two Sample Writing Tasks:

High school classes should not begin before 9:00 a.m. Do you agree with this statement? Why or why not? Be sure to be specific and explain your reasons.

In your opinion, which is most important in life: wealth, love, or health? Write an essay in which you state your opinion. Be sure to tell why you chose the one you did and explain your reasons.

Essay Scoring Scale

(©2004 by Harcourt Assessment, Inc.)

Score

- 6 These responses present clear, well-developed, and well-organized reasons related to the topic. They are focused, unified, and controlled presentations. The writer demonstrates a strong command of language by including vivid word choice and varied sentence formation. There may be an attempt at compositional risks. Overall, there is a sense of fluency and completeness. The responses are convincing and informative. Any inconsistencies are balanced by the wealth of information presented or the broader perspective offered.
- 5 These responses present a substantial amount of information related to the topic. The support is very specific and precise. The writer presents an organized, controlled, and focused composition which includes varying degrees of even clarification and illustration. Any minor organizational inconsistencies are balanced by the degree of support and control in the remainder of the response.
- 4 These responses present a moderate amount of information related to the topic. They may include a number of reasons that are briefly explained, a few reasons that are illustrated with additional details, or a few reasons with varying degrees of explanation and clarification. There may also be minor lapses, repetitions, digressions, or listiness, but these inconsistencies are balanced by the degree of support and control in the remainder of the response.
- 3 These responses present a limited amount of information related to the topic. Although there may be lapses, repetitions, irrelevant information, and digressions, they do not interfere with meaning. The writer may present the information as a list of reasons with some added details or a number of concise reasons which are illustrated. An organizational strategy is usually apparent.
- 2 These responses present a minimal amount of information related to the topic. There may be some clarification of ideas or several specific reasons given, but, overall, the information does not adequately explain the topic. Or the writing may be flawed by gaps which affect coherence.
- 1 These responses demonstrate an attempt to address the topic but lack sufficient information. The writer may present a few reasons which are clarified, a number of bare reasons, or vague, unclear, or repetitive reasons. These papers may exhibit some organizational problems that interfere with communication and leave the reader confused as to what thoughts the writer intended to convey.

The following "Writer's Checklist" (©2004 by Harcourt Assessment, Inc.) will be provided with the CHSPE writing task.

Writer's Checklist

- Did I write about the topic?
- Did I express my ideas in complete sentences?
- Did I give enough details to explain or support my ideas?
- Did I include only those details that are about my topic?
- Did I write my ideas in an order that is clear for the reader to follow?
- Did I write a topic sentence for each paragraph?
- Did I use a capital letter at the beginning of each sentence and for all other words that should be capitalized?
- Did I use the correct punctuation at the end of each sentence and within each sentence?
- Did I spell words correctly?
- Did I print or write clearly?

Reading Comprehension (Key on page 18.)

Read the passage. Then read each question about the passage. Decide which is the best answer to the question. Mark the answer you have chosen.

The Witness Tree

A Story from Kazakhstan

Two men came before a judge in his court. "Give me justice! My neighbor has robbed me!" said one man.

"He's lying," the other protested. "I've done nothing wrong."

"Let me hear what you both have to say," the judge said.

The first man began. "A while ago I went on a journey. I left my life savings – a pot of gold coins – with my neighbor, he promised to guard the money while I was away. When I returned, he denied that he had ever seen my gold coins. He says I gave him nothing!"

"My neighbor is lying!" the second man said. "I know nothing about any pot of gold coins. He never gave me anything!"

"Before you left, did you tell anyone about leaving the coins with your neighbor? Did anyone see you give them to him?" the judge asked the first man.

The man replied, "For secrecy, I told no one. No one saw us because I asked my neighbor to meet me at night by a tree in the forest. There, in the dark, I gave him the coins." The judge frowned. "It is best to have a human witness. Since there is none, we will have to ask the tree. Go to the forest. Ask the tree if it saw you give a pot of coins to your neighbor. My clerk will go with you to write down the tree's testimony."

The man and the clerk set off for the forest.

Meanwhile, the judge invited the neighbor to sit down. After a while he asked the neighbor, "Do you think they've reached the tree yet?"

The neighbor shook his head. "Not yet."

Time passed. The judge asked again, "Do you think they're there now?"

"No, not yet," the neighbor answered.

More time passed. The judge asked again, "Shouldn't they be there by now?"

The neighbor nodded. "Yes, they're probably there."

"Oh?" said the judge. "Didn't you say your neighbor never gave you anything? How do you know where he's going? How do you know how long it would take to arrive there if you've never been there? Bring back the gold you stole, or you'll be in serious trouble."

When the first man returned, the judge gave back his missing money.

"What did the tree say?" the judge asked.

"Nothing!" the bewildered man replied.

"But it revealed the truth anyway," said the judge.

1. What was the man asked to do with his neighbor's money?

- A. Protect it
- B. Bury it
- C. Spend it
- D. Divide it up

© 2004 by Harcourt Assessment, Inc.

2. The judge invited the neighbor to sit and wait because the judge –

- A. knew the man was tired
- B. wanted to find out where the tree was
- C. had a plan to discover the truth
- D. wanted to talk to someone

© 2004 by Harcourt Assessment, Inc.

3. People like the judge in this story can be described as –

- A. dishonest
- B. shrewd
- C. generous
- D. proud

© 2004 by Harcourt Assessment, Inc.

4. The story tells the reader –

- A. how the neighbor was punished
- B. why the man had trusted his neighbor
- C. which man was lying
- D. how far the man and the clerk walked

© 2004 by Harcourt Assessment, Inc.

5. A clue to predicting the outcome of the story occurs when the –

- A. neighbor denies that he robbed the first man
- B. judge is asked to settle the matter
- C. clerk goes with the man who was robbed
- D. judge says, "Oh?"

© 2004 by Harcourt Assessment, Inc.

6. Why would the robber assume that no one would find out his secret?
- A. He thought that the judge was dishonest.
 - B. He thought that he was smarter than the judge.
 - C. He thought his neighbor would not be able to find the tree.
 - D. He knew that trees cannot talk.

© 2004 by Harcourt Assessment, Inc.

7. This story was probably told in order to –
- A. share a true experience
 - B. help the reader settle disagreements
 - C. help the reader become rich
 - D. teach a lesson

© 2004 by Harcourt Assessment, Inc.

Language (Key on page 18.)

Read each sentence. Look at the underlined words in each one. There may be a mistake in punctuation, capitalization, or word usage. If you find a mistake, choose the answer that is the best way to write the underlined section of the sentence. If there is no mistake, choose *Correct as is*.

8. The club meeting will be held in the debate teams practice room.
- A. Debate teams practice
 - B. debate teams Practice
 - C. debate team's practice
 - D. *Correct as is*
9. Sarah wanted to see the concert she had been looking forward to it for a long time.
- A. concert, she had been
 - B. concert; she had been
 - C. concert she has been
 - D. *Correct as is*

© 2004 by Harcourt Assessment, Inc.

© 2004 by Harcourt Assessment, Inc.

Read the group of words in the box. There may be a mistake in the sentence structure. If you find a mistake, choose the answer that is written most clearly and correctly. If there is no mistake, choose *Correct as is*.

10. Veronica left the room, turned right, and, without any hesitation, walked outside.

- A. Leaving the room, turning right, Veronica walking outside without any hesitation.
- B. Veronica left the room and she turned right and walked outside without any hesitation.
- C. Veronica left the room turned right and walked outside without any hesitation.
- D. *Correct as is*

© 2004 by Harcourt Assessment, Inc.

11. There are extra chairs in that room that are not needed or necessary.

- A. There are extra chairs in that room.
- B. There are extra and unnecessary chairs in that room.
- C. The extra chairs in that room are not needed or necessary.
- D. *Correct as is*

© 2004 by Harcourt Assessment, Inc.

12. Some tortoises living up to 100 years are among the world's oldest animals.

- A. The world's oldest animals, some living up to 100 years are some tortoises.
- B. Some tortoises, among the world's oldest animals, are living up to 100 years.
- C. Living up to 100 years, some tortoises are among the world's oldest animals.
- D. *Correct as is*

© 2004 by Harcourt Assessment, Inc.

Read the paragraph. Then read the questions that follow the paragraph. Choose the correct answer and mark your answer.

The Challenge

It started when she was in elementary school. Sonia knew that she wanted to be a champion synchronized swimmer. Today's competition would determine whether she would earn the opportunity to go to the national contest. She performed the required technical routines flawlessly and led the other swimmers going into the free competition, the portion of the program that counted most. This series of choreographed moves performed to music required a couple of qualities. For one particularly difficult element, Sonia had to remain upside down in the water for over half a minute. She could tell by the audience's thunderous applause when she emerged from the pool that the performance had gone well. Seconds later the judges confirmed it; Sonia was on her way to the national contest.

13. This series of choreographed moves performed to music required a couple of qualities.

Good writers describe the subject using details. How can the underlined words be better written to include exact details?

- A. some abilities that she had to develop
- B. specific physical qualities
- C. special moves
- D. great strength and control

© 2004 by Harcourt Assessment, Inc.

14. Which sentence would *not* belong in this paragraph?

- A. Sonia had worked hard for many years to get to this point.
- B. The routine had gone smoothly, and Sonia had done even better than she had anticipated.
- C. The cool water always felt wonderful to Sonia; she loved the smell of chlorine.
- D. Her dream, since childhood, was finally coming true.

© 2004 by Harcourt Assessment, Inc.

15. Which of these would be the best topic sentence for this paragraph?

- A. A synchronized swimming team will be sent to the Olympics.
- B. Sonia got a new swimsuit and cap for the competition.
- C. Only a few extremely talented athletes win competitions.
- D. For almost as long as she could remember, Sonia had wanted to go to the Olympics.

© 2004 by Harcourt Assessment, Inc.

Multiple-Choice Answer Key	
Reading Comprehension	
1.	A
2.	C
3.	B
4.	C
Language	
8.	C
9.	B
10.	D
11.	A
12.	C
13.	D
14.	C
15.	D

Mathematics Section (Key on page 21.)

Read each question or problem carefully. Then answer the question or work the problem. Mark your answer.

16. The Arctic Ocean has a surface area of about 14 million square kilometers, approximately 9.8 million square kilometers of which is covered by a polar ice mass. What is the surface area of this polar ice mass written in standard form?

- A. 0.0000098 sq km
- B. 0.000098 sq km
- C. 9,800,000 sq km
- D. 98,000,000 sq km

© 2004 by Harcourt Assessment, Inc.

17. Cyndi borrowed \$390 from her parents when she went on the school ski trip. If she pays them 65% of her \$40 baby-sitting fees each month, how many months will it take her to pay back the entire \$390?

- A. 10
- B. 15
- C. 26
- D. 28

© 2004 by Harcourt Assessment, Inc.

18. The total length of the world's major railroad routes is approximately $3\frac{1}{4}$ times the distance from Earth to the moon. This distance from Earth to the moon is close to 240,000 miles. Which measure is closest to the length of the world's major railroad routes?

- A. 7.8×10^3 mi.
- B. 7.8×10^4 mi.
- C. 7.8×10^5 mi.
- D. 7.8×10^6 mi.

© 2004 by Harcourt Assessment, Inc.

19.

Number of Term	Term
1	8
2	4
3	2
...	...
n^{th}	$8(0.5)^{n-1}$

What is the fifth term of the geometric sequence shown in the table above?

- A. 1.0
- B. 0.75
- C. 0.5
- D. 0.25

© 2004 by Harcourt Assessment, Inc.

20. What value for x makes

$$\frac{2}{x-1} = \frac{5}{x+2} \text{ true?}$$

- A. 3
- B. 1
- C. -1
- D. -3

© 2004 by Harcourt Assessment, Inc.

21. A river surveyor was creating a map to show the elevation changes in a river. The line that he used to describe the changes has the equation shown below.

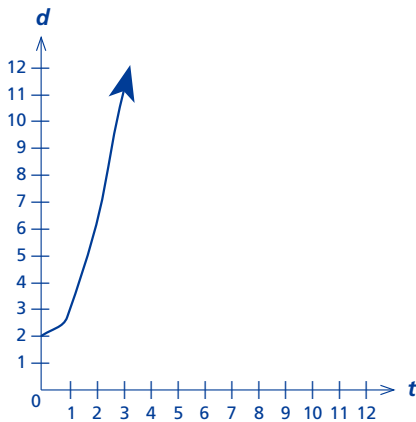
$$2x + 3y = 6$$

What is the slope of this line?

- A. $-\frac{3}{2}$
- B. $-\frac{2}{3}$
- C. $\frac{2}{3}$
- D. 2

© 2004 by Harcourt Assessment, Inc.

22. An airplane is moving down a runway with constant acceleration. The graph below shows the relationship between d , the distance from the beginning of the runway, and t , the time after the airplane begins to move.

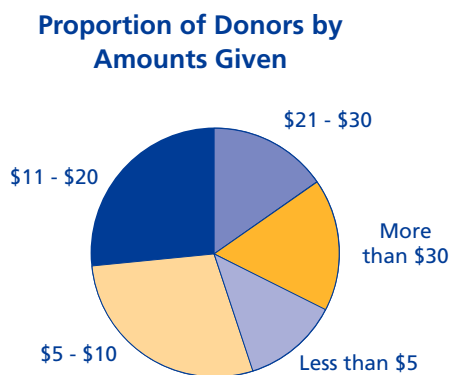


Which equation best represents this curve when $t \geq 0$?

- A. $d = \frac{t^2}{2}$
- B. $d = 2t^2$
- C. $d = t^2 - 2$
- D. $d = t^2 + 2$

© 2004 by Harcourt Assessment, Inc.

23. A group of students is collecting money to fund a bicycle path. A total of 280 people have donated. The circle graph below shows the proportion of donors by the amounts given.



Which is the closest to the number of people who gave more than \$20?

- A. 56
- B. 98
- C. 168
- D. 182

© 2004 by Harcourt Assessment, Inc.

24. The table below shows the lengths of the major north-to-south routes in the United States.

Major United States Routes

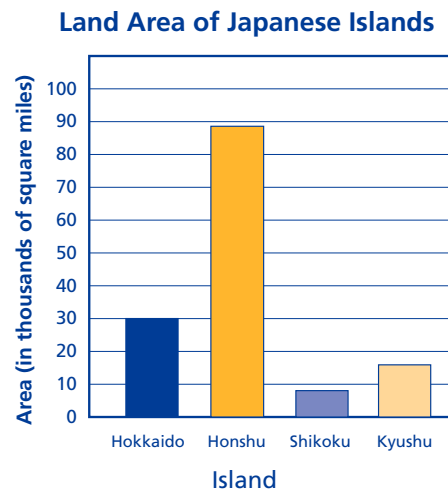
Interstate Number	Length of Highway (to nearest 10 miles)
I-65	890
I-55	940
I-75	1790
I-15	1440
I-5	1380
I-35	1830
I-95	1890

To the nearer 10 miles, what is the difference between the mean and median of these lengths?

- A. 0
- B. 10
- C. 20
- D. 30

© 2004 by Harcourt Assessment, Inc.

25. Four of the islands of Japan account for about 96% of Japan's land area. The area of the 4 islands is shown in the bar graph below.



Which is closest to the total land area of Japan?

- A. Between 90,000 and 100,000 square miles
- B. Between 130,000 and 140,000 square miles
- C. Between 140,000 and 150,000 square miles
- D. Between 230,000 and 240,000 square miles

© 2004 by Harcourt Assessment, Inc.

26. Mr. Wu's biology class is writing group reports about the Hawaiian Islands. He has a total of 10 groups. Mr. Wu will assign an island and a topic at random to each of the groups. No two group assignments will be the same.

Five Islands: Hawaii, Maui, Lanai, Oahu, or Kauai

Topics: Plant Life or Animal Life

Linda and Kim are in different groups, but they both want to write about Kauai. What is the probability that both Linda's and Kim's groups will receive Kauai assignments?

- A. $\frac{1}{5}$
 B. $\frac{1}{45}$
 C. $\frac{1}{50}$
 D. $\frac{1}{90}$

© 2004 by Harcourt Assessment, Inc.

27. Each day a freight train leaves Lake City and travels to Hilltown, Chester, and Freeburg. Then it returns to Lake City. The train's route forms a trapezoid with a right angle as shown below.

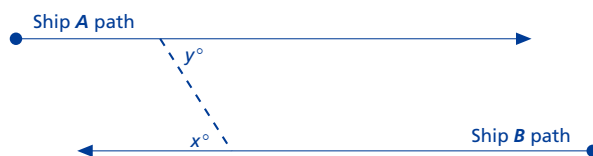


Which is closest to the distance in miles from Freeburg to Lake City?

- A. 51
 B. 43.8
 C. 39
 D. 32.7

© 2004 by Harcourt Assessment, Inc.

28. Cargo Ship *A*, carrying salmon from Alaskan waters, is traveling a linear path into port at Seattle. Cargo Ship *B*, from San Francisco, is traveling on a path parallel to the path of Cargo Ship *A*.



If the value of x is 42, what is the value of y ?

- A. 42
 B. 48
 C. 138
 D. 148

© 2004 by Harcourt Assessment, Inc.

29. Elaine has two suitcases that are similar rectangular solids. The length of the second suitcase is twice the length of the first suitcase. If the first suitcase has a volume of 1568 cubic inches, what is the volume of the second suitcase in cubic inches?

- A. 3136
 B. 6272
 C. 9408
 D. 12,544

© 2004 by Harcourt Assessment, Inc.

Multiple-Choice
 Answer Key
 Mathematics
 16. C
 17. B
 18. C
 19. C
 20. A
 21. B
 22. D
 23. B
 24. B
 25. C
 26. B
 27. C
 28. A
 29. D